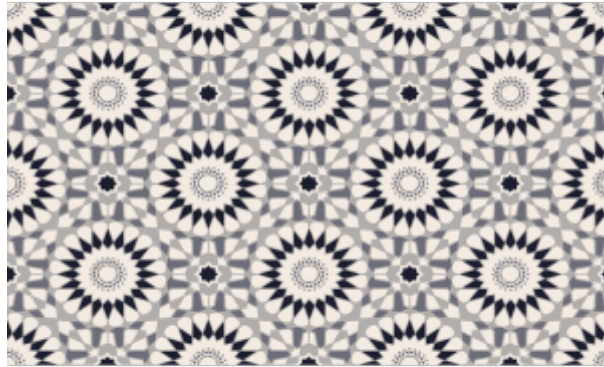




## Wall decal floor tiles non-slip flower mosaic



**Manufacturer:** Ambiance-sticker

**Reference:**col-floor-RJ-B055

**Price:** ~~59.00€~~34.90€

Offer valid from 24/01/2024 to 25/10/2035

### Options:

*Size (HxL) :* 60 x 100 cm (24 x 40 in.)

### Description:

Tile imitation wall decal floor tiles for your interior decoration!

These **tile wall decals cement floor tiles** and this **\_nameofproduct\_** you can finally harmonize the decoration of your floor with that of your walls! Our floor stickers & imitation tiles are very easy to apply. They cut easily with scissors to fit in every corner of your home.

- Installation advice: Peel off the sticker from its support and apply it on a smooth floor. Easy to install, no air bubbles.
- Waterproof and anti-slip plastic surface
- Resistant to scratches and cleaning products
- Thickness: 0.2 mm

What is a floor sticker?

This is a large semi-flexible sticker about **60x100 cm**, 0.2 mm thick, you take off its support to apply it on a dry, clean and smooth. The sticker is a vinyl printed and laminated on the top. It resists claws, scratches, water, cleaning products and frequent passages of people.

How to put a soil sticker?

Peel off the sticker from its support and apply it on a dry, clean, smooth and non-porous surface. Our Easy Apply special vinyl allows air to escape during installation. The installation is fast and guaranteed without air bubbles. The sticker is repositionable at the beginning, which allows you to correct a pose error.

Can I cut a floor sticker?

Yes, our floor stickers are easily cut with scissors or a cutter. If our sticker is too big for your surface, simply cut the edges that protrude with a ruler and a cutter for example. It's quick and easy.

Can I cover a large area with floor stickers?

You can apply several identical floor stickers next to each other to cover a large area. The result is often beautiful, even if they are the same stickers glued to each other. The ideal is to apply them edge-to-edge, but you can also overlay a sticker on the edge of another. The small thickness of 0.2 mm hardly feels, even barefoot.

Where to stick a floor sticker?

The floor sticker will hold on any dry surface, clean, smooth and non-porous (tiles, linen, stone, raw or varnished parquet, glass wool, ...). The sticker will hold even if it covers the joints of your tile. Not recommended on: carpet, brick, gravel, non flat surface.

Does the floor sticker leave traces?

The sticker soil leaves no trace during the withdrawal the first month. After three years, if you take off your wall sticker, it is possible that traces of glue appear. Just use a solvent or hot water to clean them. Your floor, tiles, linoleum, parquet or other will not be damaged.

Where to stick the decorative sticker ?

Application Council

Peel off the sticker from its support and apply it on a dry, clean, smooth and non-porous surface (tiles, linen, stone, rough or varnished parquet, glass wool, ...). The sticker will hold even if it covers the joints of your tile. Not recommended on: carpet, brick, gravel, non flat surface.

**IMPORTANT:** You have the option to arrange each element of the sticker the way you want. Which gives multiple ideas to decorate your interior.

## How to put a wall decal



### Technical specification

**Vinyl Type:** Orafol Orajet® 3164-XMRA Matte Monomer + KOALA Protective Laminate **Shelf life:** 3 years in normal use **Thickness:** 0.2 mm (vinyl 0.1 mm + laminate 0, 1mm) **Non-slip:** yes  
**Waterproof:** yes **Washable with water:** yes **Repositionable:** no. However, in case of installation error, the sticker is repositioned without a trace at the beginning. **Air bubbles:** no. Easy Apply special vinyl that avoids air bubbles. **Resistance:** Thanks to the plastic protective laminate, the floor sticker is resistant to rubbing, scratching, water and cleaning products (bleach, antilime, strippers, ...), as well as passages of people. **Removable:** yes. Glue traces may appear during removal. Solvent or hot water will remove them very easily. **Toxic:** no **Flammable:** no (NF P 92-501 - M1) **Odor:** none **Type of adhesive:** acrylic glue **Rendering:** Matt **Temperature resistance:** da -40 a 85 °  
**C Origin:** Made in France & Belgium. Vinyl: Made in Germany.

\* Applies to all our printed and cut vinyls. Not applicable for slates, phosphorescers, whiteboards and other types of materials

[Link to the product](#)